



INDOFINE Chemical Company, Inc.

121 Stryker Lane, Bldg. 30, Suite 1 • Hillsborough, NJ 08644 • U.S.A.

Phone: (908) 359-6778 • FAX: (908) 359-1179

website: www.indofinechemical.com

e-mail: chemical@indofinechemical.com

CERTIFICATE OF ANALYSIS

Catalog number: 021055S

Product name: **HOMOORIENTIN with HPLC**
(Isoorientin, Luteolin 6-C-glucoside)

CAS Number: [4261-42-1]

Lot Number: 2310862

Chemical Formula: C₂₁H₂₀O₁₁

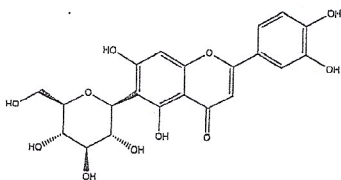
Molecular Weight: 448.38

Appearance: Yellow powder

Water Content: 2.3%

Storage: Store in cool, dry place. Protect from light.

Purity(HPLC): 99.8%



Prepared by:
Ramesh Mandadi
Ramesh Mandadi
Director of Operations

Reviewed and Approved by:
Sujata Moton
Sujata Moton
VP

INDOFINE Chemical Company, Inc.

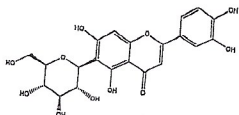
121 Stryker Lane, Bldg. 30, Suite 1 • Hillsborough, NJ 08844 • U.S.A.

Phone: (908) 359-6778 • FAX: (908) 359-1179

website: www.indofinechemical.com

e-mail: chemical@indofinechemical.com

HPLC ANALYSIS

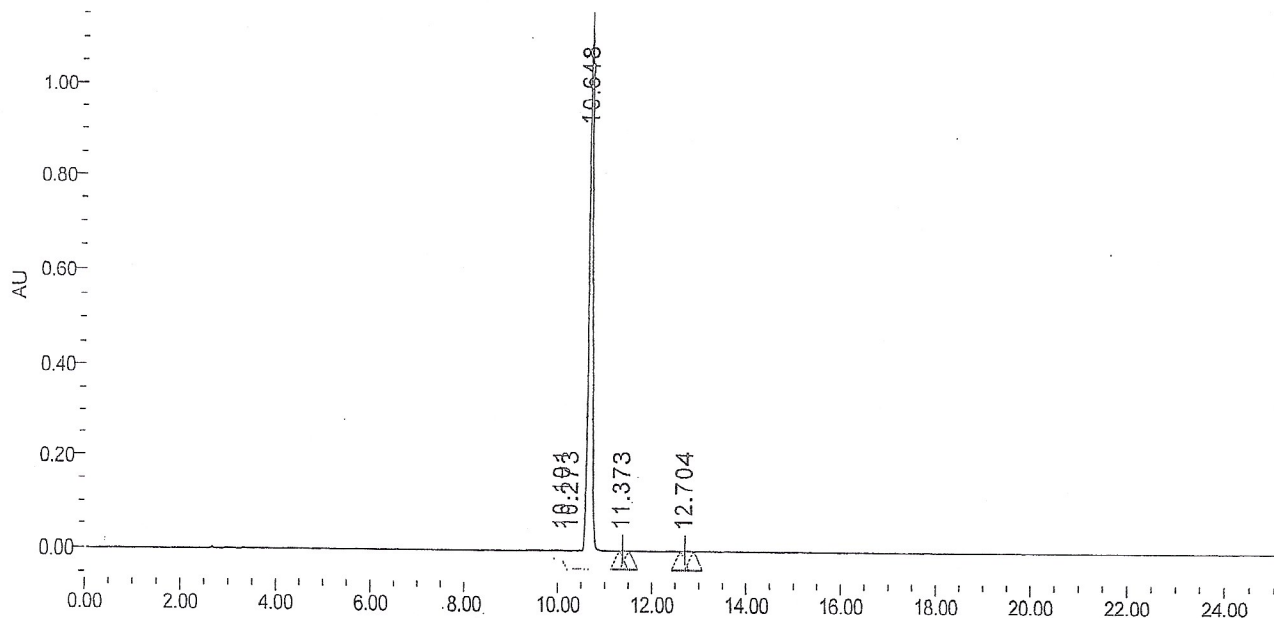


Catalog No.: 021055S
Product Name: Homoorientin
Lot No.: 2310862

SAMPLE INFORMATION

Sample Name:	Isoorientin	Acquired By:	
Sample Type:		Sample Set Name	
Vial:	95	Acq. Method Set:	Isoorientin
Injection #:	1	Processing Method	sample
Injection Volume:	5.00 ul		
Run Time:	30.0 Minutes		

Auto-Scaled Chromatogram



peak Results

	RT	Area	% Area	Height	USP Plates	USP Resolution
1	10.101	6256	0.10	1220	71892.89	
2	10.273	1924	0.03	283	22866.90	1.06
3	10.648	6403199	99.78	1130648	81400.97	2.26
4	11.373	2459	0.04	520	77202.18	5.23
5	12.704	3359	0.05	557	131052.23	9.29